



Meccanotecnica
Umbra / Turkey

a Story of Excellence



Meccanotecnica
Umbra / Turkey

a Story of Excellence

Meccanotecnica Umbra Turkey
SIZDIRMAZLIK ELEMANLARI SANAYI VE TİCARET
ANONİM ŞİRKETİ

İkiteli Organize Sanayi Bölgesi Eskoop Sanayi Sitesi C-6 Blok
No:292-294

Başakşehir / İSTANBUL

Phone: +90 212 671 82 49 / +90 212 671 82 50

www.meccanotecnica.com.tr

mtu.tr@mtu-group.com

Meccanotecnica Umbra spa

Headquarters

Via G. Agnelli, 7

06042 Campello sul Clitunno (PG) ITALY

Phone +39 0743 279.1

www.meccanotecnicaumbra.com

italy@mtu-group.com

India

Plot # C 23 & C 24, SIPCOT
Industrial Complex, Nilakottai Taluk,
Pallapatti Village 624 201,
Dindigul District,
Tamilnadu, India.
www.meccanotecnica.in
india@mtu-group.com

Brazil

R. João Maria Goes, 399
83060-206 São José dos Pinhais
PR- Brasil
Telefone +55 41 3381-2600
Fax: +55 41 3382-3523
www.meccanotecnica.com.br
brasil@mtu-group.com

China

North of No 8 road jiao zhou wan
industrial park, Jiao zhou,
Qing dao, PRC
Phone +86 532 8729 3888 Ext 1007
Fax +86 532 8729 3118
www.meccanotecnica.cn.com
china@mtu-group.com

USA

Sales Office
41650 Gardenbrook Road,
Suite # 110 - Novi, MI 48375
Tel.: 248-347-0606 ext. 224
www.meccanotecnica.us.com
usa@mtu-group.com

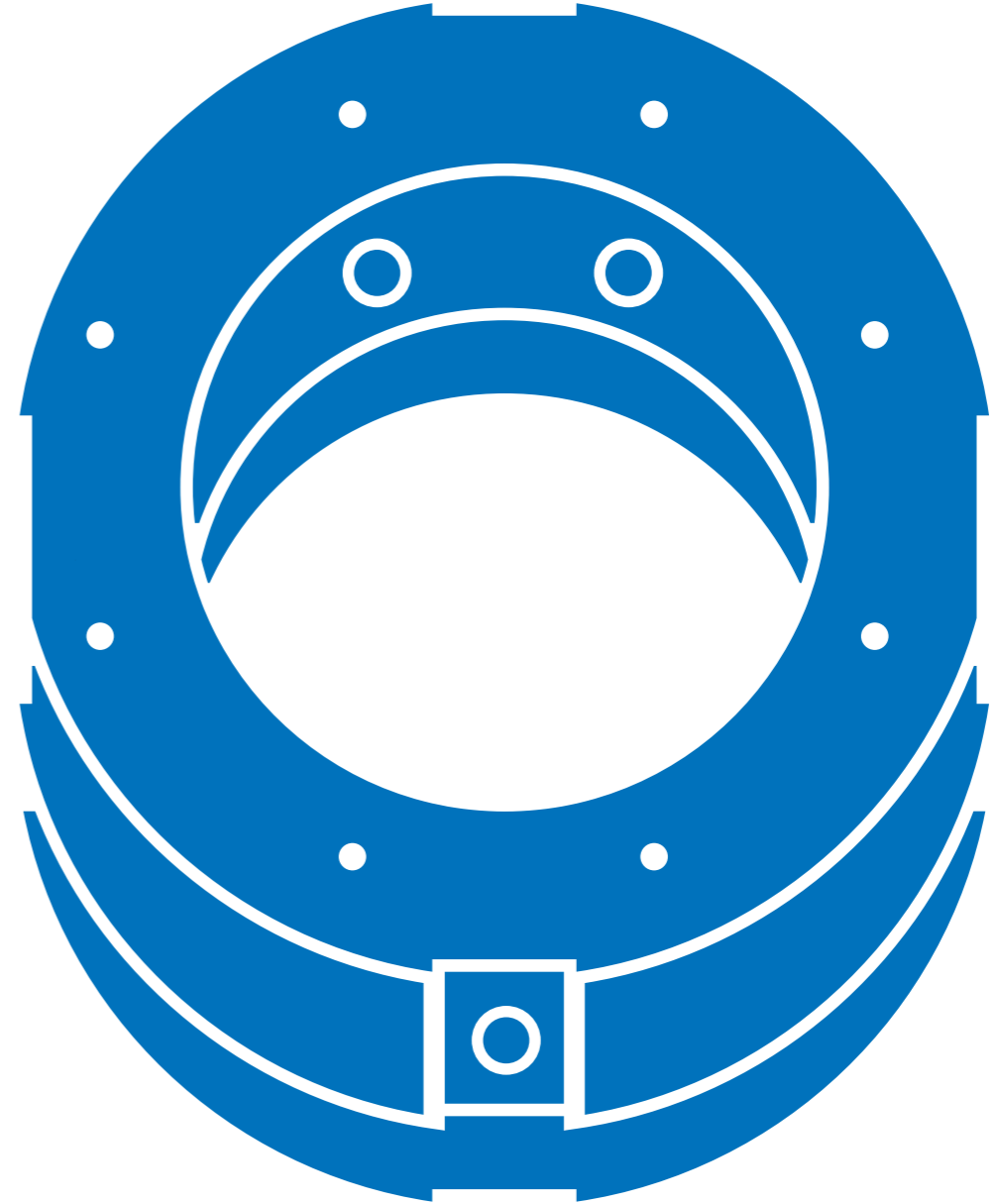
Sweden

Huhnseal AB
Box 288 Jarvgatan 1 - 261 23
Landskrona
Tel: +46 418 44 99 40
Fax: +46 418 44 99 69
www.huhnseal.com
sales@huhnseal.com

Canada

Fugesco inc.
80 Avenue Leacock
Pointe-Claire, Quebec
H9R 1H1 Canada
Tel.: (514) 631 3246
Fax: (514) 631 2566
sales@fugesco.com

Join us:



Mekanik Salmastra
Endüstriyel Uygulamalar
eksiksiz
ürün yelpazesi#06

Europa



Characteristics:
Single Mechanical Seal
Single Directional
Unbalanced

Limit of applications:
Pressure $p = 12$ bar
Speed $v = 15$ m/s
Temperature $t = -30 +200^{\circ}\text{C}$
Available: Europa1 with according DIN 24960

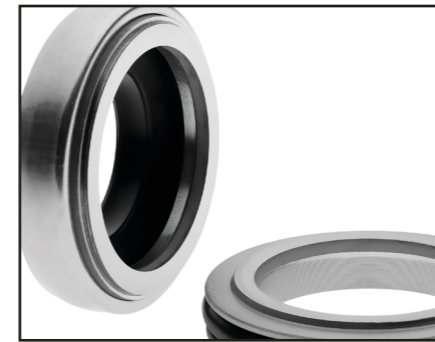
Simplex



Characteristics:
Single Mechanical Seal
Single Directional
Unbalanced

Limit of applications:
Pressure $p = 10$ bar
Speed $v = 20$ m/s
Temperature $t = -30 +200^{\circ}\text{C}$

FA



Characteristics:
Single Mechanical Seal
Rubber Bellows seal
BI-directional
Unbalanced

Limit of applications:
Pressure $p = 6$ bar
Speed $v = 12$ m/s
Temperature $t = -30 +200^{\circ}\text{C}$

DRM1-S



Characteristics:
Single Mechanical Seal (conical spring)
Single Directional
Unbalanced

Limit of applications:
Pressure $p = 12$ bar
Speed $v = 15$ m/s
Temperature $t = -20 +200^{\circ}\text{C}$
Available: DRM1-HS / Balanced
Vacuum to 25 bar

DPS



Characteristics:
Single seal single or multiple springs
BI-directional
Balanced

Limit of applications:
Pressure $p = 12$ bar
Speed $v = 15$ m/s
Temperature $t = -35 +180^{\circ}\text{C}$
Available: version with stationary to
According DIN 24960

Type 6A



Unitized compact mechanical face seal with
glued elastomer bellows

Characteristics:
Single Mechanical Seal, BI-directional

Limit of applications:
Pressure $p = 4$ bar
Speed $v = 10000$ rpm
Temperature $t = -35 +150^{\circ}\text{C}$

FG



Characteristics:
Single Mechanical Seal
Rubber Bellows seal
BI-directional
Unbalanced

Limit of applications:
Pressure $p =$ available 12 or 16 bar
Speed $v = 10$ m/s
Temperature $t = -30 +200^{\circ}\text{C}$
Available: FG1-FG2-FG3 (metric/inch)
with stationary seats type LE-OL/CC

FP/D



Characteristics:
Single Mechanical Seal
Rubber Bellows seal
BI-directional
Unbalanced - According to DIN 24960

Limit of applications:
Pressure $p = 12$ bar
Speed $v = 15$ m/s
Temperature $t = -30 +200^{\circ}\text{C}$

FP type a/b

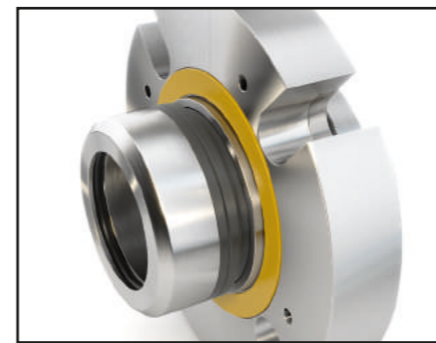


Characteristics:
Single Mechanical Seal
Rubber Bellows seal
BI-directional
Unbalanced - According to DIN 24960

Limit of applications:
Pressure $p = 12$ bar
Speed $v = 15$ m/s
Temperature $t = -30 +200^{\circ}\text{C}$

ES

PRODUCT OF HUHNSSEAL

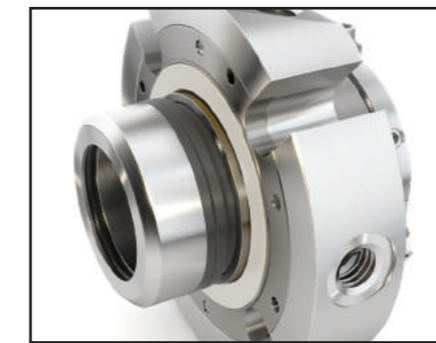


Characteristics:
Single Cartridge Seal
BI-directional
Balanced

Limit of applications:
Pressure $p = 25$ bar
Speed $v = 3600$ rpm
Temperature $t = -30 +250^{\circ}\text{C}$

ED

PRODUCT OF HUHNSSEAL

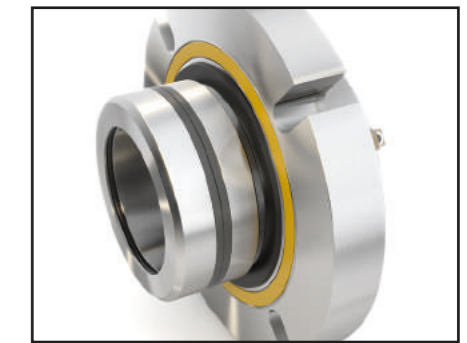


Characteristics:
Double Cartridge Seal
BI-directional
Balanced

Limit of applications:
Pressure $p = 25$ bar
Speed $v = 3600$ rpm
Temperature $t = -30 +250^{\circ}\text{C}$

BFS

PRODUCT OF HUHNSSEAL



Characteristics:
Zero-Flush Cartridge seal designed for slurry
applications.

Limit of applications:
Pressure Up to 25 bar
Speed Up to 18 m/s
Temperature Up to 80 °C without quench
Slurry with up to 60% solid contents by weight

DR1-S



Characteristics:
Single seal multiple springs
BI-directional
Unbalanced
According to DIN 24960

Limit of applications:
Pressure $p = 16$ bar
Speed $v = 20$ m/s
Temperature $t = -20 +200^{\circ}\text{C}$
Available: DR1-HS / Balanced - Vacuum to 40 bar
with stationary seats type OL/CC or CL

DR1-D



Characteristics:
Double seal multiple springs
BI-directional
Unbalanced
According to DIN 24960

Limit of applications:
Pressure $p = 16$ bar
Speed $v = 20$ m/s
Temperature $t = -20 +200^{\circ}\text{C}$
Available: DR1-HD / Balanced - Vacuum to 40 bar

DR2-S



Characteristics:
Single seal multiple springs
BI-directional
Balanced
According to DIN 24960

Limit of applications:
Pressure $p = 25$ bar
Speed $v = 20$ m/s
Temperature $t = -20 +200^{\circ}\text{C}$
Available: stationary seats type OL/CC or CL

PRODUCT OF Fugesco



Radial Type Seals
are used in hydroelectric
turbines, pump turbines, and
large pumps.

PRODUCT OF Fugesco



Axial Type seals
are specifically designed for
hydroelectric turbines and large
water pumps.
Pump applications include: sewage
handling, filtration, and irrigation.

